

Housings

revos MINI



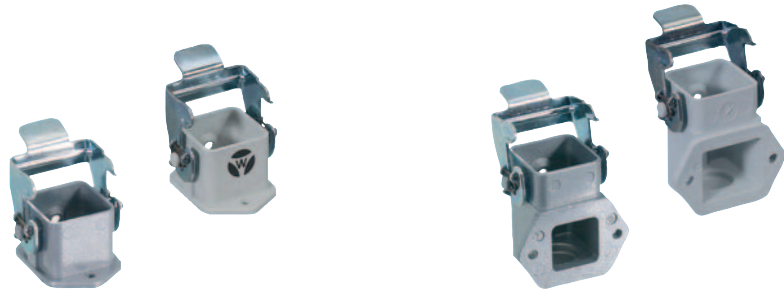
Hoods
Lateral cable entry

Hoods
Top cable entry

Description	Type	M	Part No.	Std. Pack	Type	M	Part No.	Std. Pack						
Metal housings for revos MINI														
with cable gland, IP54, $\rightarrow I \leftarrow 3 - 14.5$ mm	MIN GOT GA 7 M20 25 Z0	20	76.350.0736.0	10	MIN GOT GB 7 M20 25 Z0	20	76.352.0736.0	10						
with threaded collar	MIN GOT GA 7 M20 25 Z1	20	76.350.0736.1	10	MIN GOT GB 7 M20 25 Z1	20	76.352.0736.1	10						
Plastic housings for revos MINI														
with cable gland, IP54, $\rightarrow I \leftarrow 3 - 14.5$ mm					MIN GOT GB 7 M20 25 P0	20	76.352.0760.0	10						
with threaded collar	MIN GOT GA 7 M20 25 P1	20	76.350.0760.1	10	MIN GOT GB 7 M20 25 P1	20	76.352.0760.1	10						
with cable gland, IP68	MIN GOT GA 7 M20 25 P5	20	76.350.0760.5	10	MIN GOT GB 7 M20 25 P5	20	76.352.0760.5	10						
Technical data														
Material: metal/plastic	Die cast zinc alloy/Polyamide				Die cast zinc alloy/Polyamide									
Surface	silicon-free/-				silicon-free/-									
Locking levers	zinc-plated steel				zinc-plated steel									
Gasket	NBR				NBR									
Degree of protection														
with latched locking levers	IP54				IP54									
with appropriate cable glands	IP65				IP65									
Temperature range	-40 – +120 °C				-40 – +120 °C									
Dimensions														
Accessories									Type	Part No.	Std. Pack	Type	Part No.	Std. Pack
Cover without gasket for male insert														
Plastic material, gray									MIN AD DA 7 P	07.417.6753.0	10	MIN AD DA 7 P	07.417.6753.0	10
Metal, nickel-plated									MIN AD DA 7 Z	07.417.6729.0	10	MIN AD DA 7 Z	07.417.6729.0	10
Cover with gasket for female insert														
Plastic material, gray									MIN AD DB 7 P	07.417.6853.0	10	MIN AD DB 7 P	07.417.6853.0	10
Metal, nickel-plated									MIN AD DB 7 Z	07.417.6829.0	10	MIN AD DB 7 Z	07.417.6829.0	10
									MIN AD DB 7 Z	07.417.6829.0	10			
									Contact inserts on pages 1044–1045			Contact inserts on pages 1044–1045		

Housings

revos MINI



Open-bottom base

Open-bottom base, angled

Description	Type	M	Part No.	Std. Pack	Type	M	Part No.	Std. Pack
Metal housings for revos MINI								
Open-bottom base	MIN GUT GA 7 25 Z	-	76.320.0729.0	10	MIN GUT GB 7 25 Z	-	76.321.0729.0	10
Open-bottom base, angled								
Plastic housings for revos MINI								
Open-bottom base	MIN GUT GA 7 25 P	-	76.320.0753.0	10	MIN GUT GB 7 25 P	-	76.321.0753.0	10
Open-bottom base, angled								
Technical data								
Material: metal/plastic	Die cast zinc alloy/Polyamide				Die cast zinc alloy/Polyamide			
Surface	silicon-free/-				silicon-free/-			
Locking levers	zinc-plated steel				zinc-plated steel			
Gasket	NBR				NBR			
Degree of protection								
with latched locking levers	IP54				IP54			
with appropriate cable glands	IP65				IP65			
Temperature range	-40 – +120 °C				-40 – +120 °C			
Dimensions								
	<p>Cut-outs for open-bottom bases</p>				<p>Cut-outs for open-bottom bases</p>			
Accessories	Type		Part No.	Std. Pack	Type		Part No.	Std. Pack
Cover without gasket for male insert								
Plastic material, gray	AD REVOS MINI		07.417.6753.0	10	AD REVOS MINI		07.417.6753.0	10
Metal, nickel-plated	AD REVOS MINI		07.417.6729.0	10	AD REVOS MINI		07.417.6729.0	10
Cover with gasket for female insert								
Plastic material, gray	AD REVOS MINI		07.417.6853.0	10	AD REVOS MINI		07.417.6853.0	10
Metal, nickel-plated	AD REVOS MINI		07.417.6829.0	10	AD REVOS MINI		07.417.6829.0	10
	Contact inserts on pages 1044–1045				Contact inserts on pages 1044–1045			

