

## TWIDDLE lenses for Nichia 083 LEDs



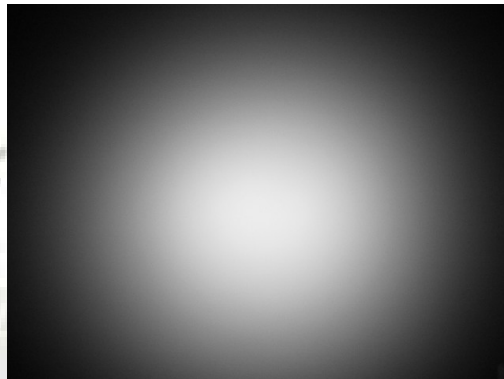
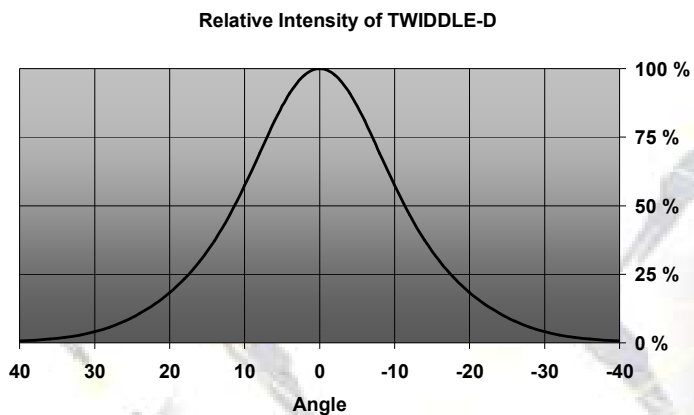
- Specially designed for Nichia NS6x083 series of LEDs
- Special care taken to make a uniform white or warm white illumination.
- Lens material optical grade PMMA
- Integrated holder. Fastening to heat sink with a PU foam adhesive tape of automotive grade
- Compact dimensions 21.6 x 14.4 mm. Square form enables easy build of matrix without any gaps between lenses.
- New PATENT PENDING "Omni-directional" technique, allows freely swivel the lens and its light distribution in any angle within +/- 15 degrees from the nominal position

## LENS TYPES

NAME	ORDERING CODE	FWHM Angle
TWIDDLE DIFFUSER	TWIDDLE-D (n. FA10734)	±12°
TWIDDLE WIDE	TWIDDLE-W (n. FA10736)	±N/A°

## MEASUREMENTS (using warm white LED)

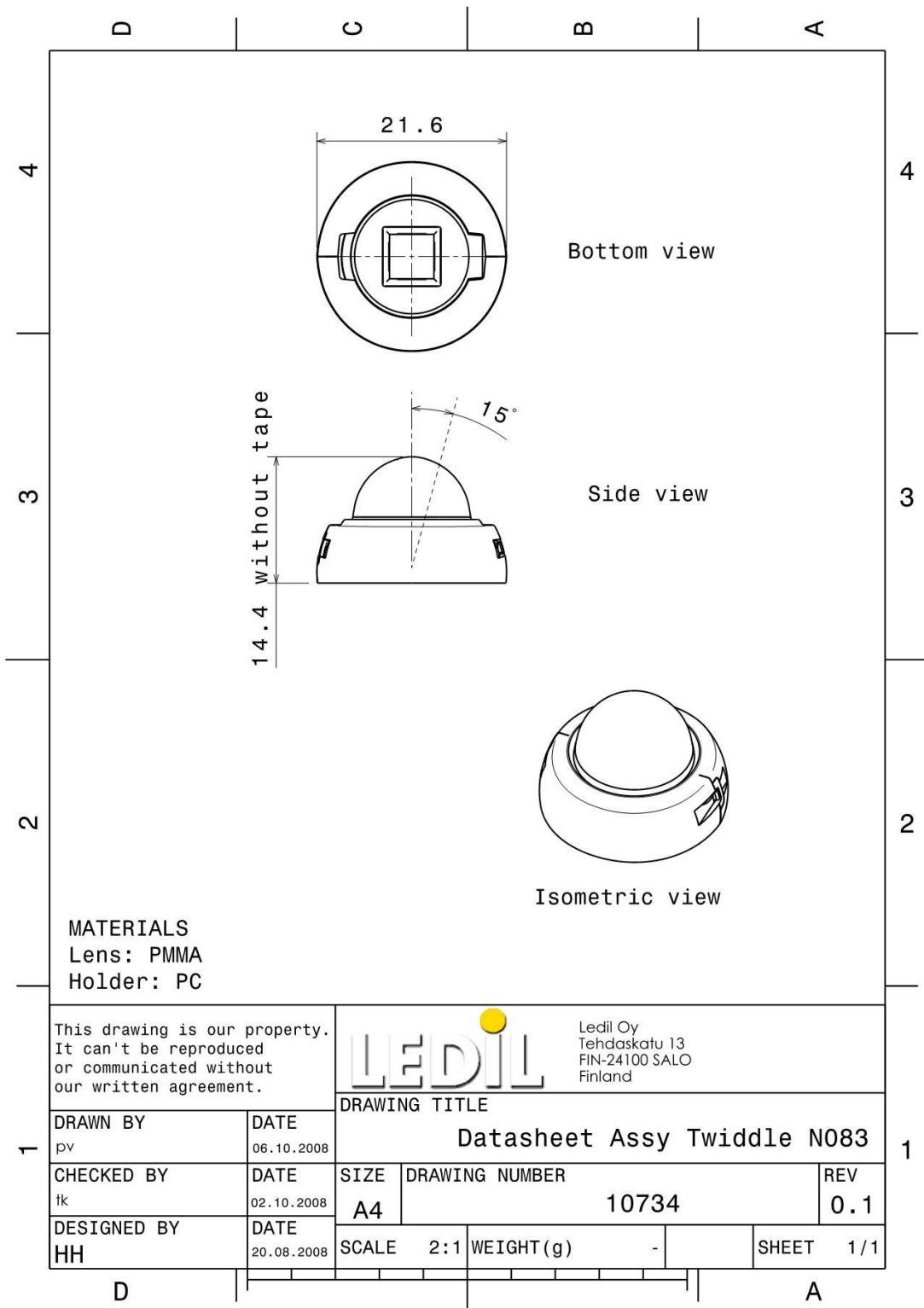
### TWIDDLE-D



### TWIDDLE-W

COMING SOON!

## DIMENSIONS



© Ledil Oy - PRELIMINARY - Subject to change without prior notice