



**Type: NSO-01XRE-05L-35x16.2**  
**Diameter:Φ35.00mm**  
**Height:16.2mm**  
**Fov:5°**  
**Material:Optical grade Acrylic plastic**  
**Up to 93% efficiency**  
**LED Series:CREE-XLamp XR-E**

Applications:

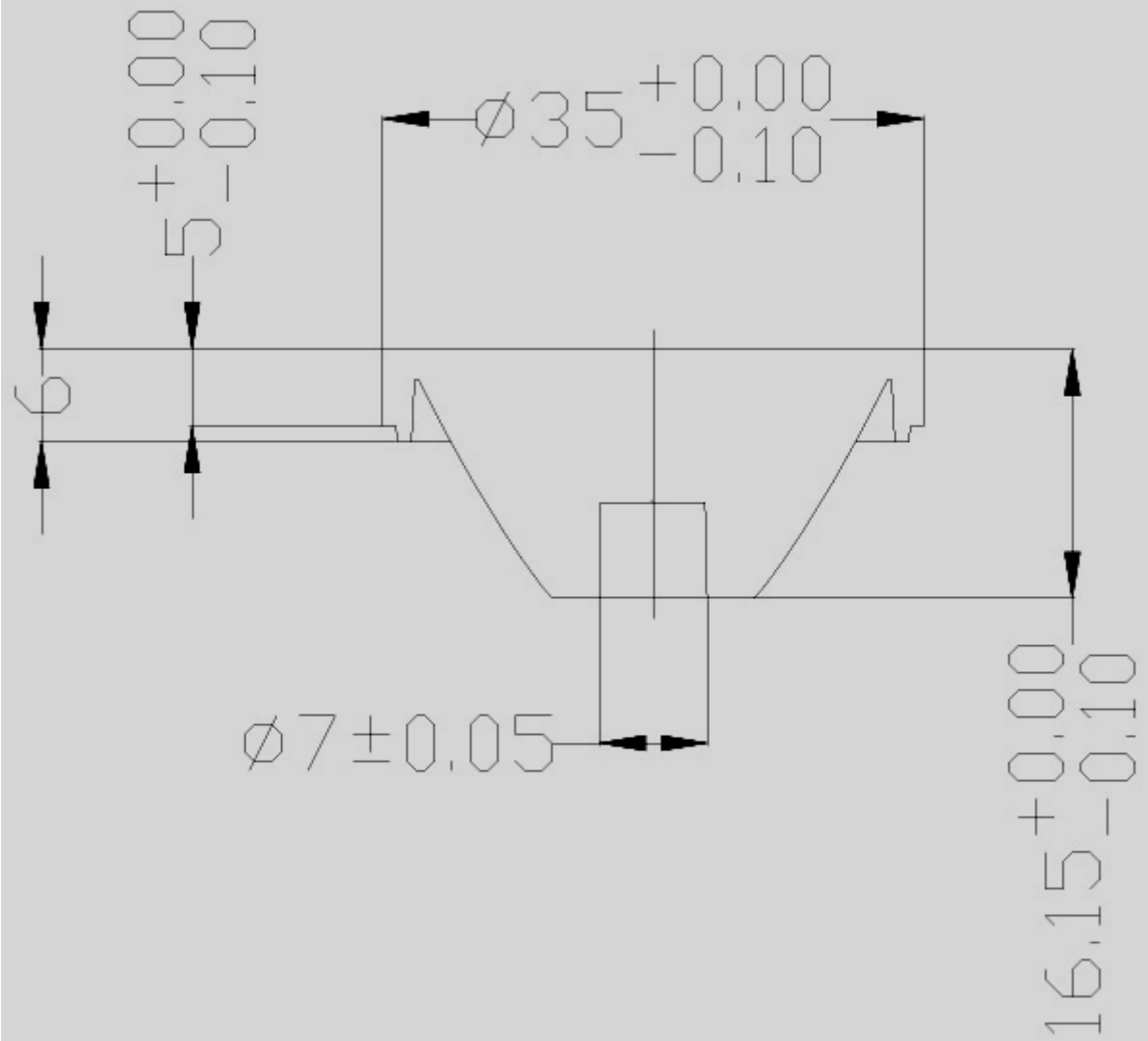
Reading lights(car, bus, aircraft)  
Portable (flashlight, bicycle)  
Mini-accent/Decorative/Fiber Optics Alternative  
Undershelf / Task Lighting  
Indoor and Outdoor Commercial and Residential Architectural lighting

- Operating Temperature range  $-40^{\circ}\text{C} \sim +70^{\circ}\text{C}$  (upper limit  $+80^{\circ}\text{C}$ )
- Storage Temperature range  $-40^{\circ}\text{C} \sim +70^{\circ}\text{C}$  (upper limit  $+80^{\circ}\text{C}$ )

• Usage and Maintenance :

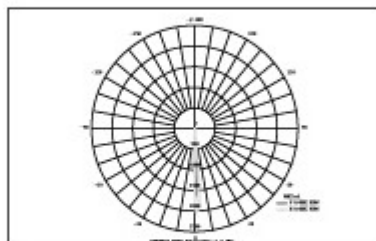
1. If necessary, clean lenses with mild soap, water and soft cloth
2. Never use any commercial cleaning solvents on lenses, like alcohol

## Lens dimensions and Top Views



## Light Distribution Curve

NAME: <b>NSO-01XRE-05L-35x16.2</b>	TYPE:	WEIGHT:
DIMENSION:	SPECIFICATION:	SERIAL No.:
MANUFACTURER:	SURFACE:	PROTECTION ANGLE:



DATA OF LAMP		PHOTOMETRIC DATA	
MODEL	CREE-XRE	Imax(cd)	2887
NOMINAL POWER(W)	1	AVAILABILITY(%)	29.2
RATED VOLTAGE(V)	3.38	Avai. FLUX(lm)	20.77
NOMINAL FLUX(lm)	71.240	EFFICIENCY(%)	85.9
LAMPS INSIDE	1	TOTAL FLUX(lm)	61.19
TEST VOLTAGE(V)	3.38	• ±50%(H,V)	5.4DEG

AREA FLUX DIAGRAM																	UNIT:lm			
																	• t	• a		
90	0.00	0.00	0.01	0.01	0.01	0.02	0.02	0.02	0.02	0.02	0.02	0.02	0.01	0.01	0.01	0.01	0.00	0.00	0.20	0.00
80	0.00	0.00	0.01	0.01	0.02	0.02	0.02	0.03	0.03	0.03	0.03	0.02	0.02	0.02	0.01	0.01	0.00	0.00	0.28	0.00
70	0.00	0.00	0.01	0.01	0.02	0.03	0.03	0.03	0.03	0.03	0.03	0.03	0.02	0.02	0.01	0.01	0.00	0.00	0.35	0.00
60	0.00	0.01	0.01	0.02	0.02	0.03	0.04	0.04	0.05	0.05	0.05	0.04	0.03	0.03	0.02	0.01	0.01	0.00	0.46	0.00
50	0.00	0.01	0.01	0.02	0.03	0.04	0.06	0.08	0.09	0.09	0.08	0.07	0.05	0.03	0.02	0.01	0.01	0.00	0.70	0.00
40	0.00	0.01	0.01	0.02	0.03	0.07	0.09	0.12	0.17	0.18	0.14	0.10	0.07	0.04	0.02	0.01	0.01	0.00	1.10	0.00
30	0.00	0.01	0.01	0.02	0.05	0.09	0.15	0.40	0.69	0.73	0.49	0.20	0.09	0.06	0.03	0.02	0.01	0.00	3.03	0.00
20	0.00	0.01	0.01	0.02	0.06	0.10	0.33	0.94	1.52	1.66	1.10	0.44	0.12	0.07	0.03	0.02	0.01	0.00	6.43	0.00
10	0.00	0.01	0.01	0.03	0.07	0.11	0.45	1.26	7.39	16.7	1.54	0.61	0.14	0.07	0.03	0.02	0.01	0.00	28.4	18.4
0	0.00	0.01	0.01	0.03	0.07	0.11	0.38	1.11	2.99	4.13	1.29	0.53	0.13	0.07	0.03	0.02	0.01	0.00	10.9	2.34
-10	0.00	0.01	0.01	0.02	0.06	0.10	0.20	0.63	1.10	1.14	0.73	0.27	0.11	0.06	0.03	0.02	0.01	0.00	4.51	0.00
-20	0.00	0.01	0.01	0.02	0.04	0.09	0.13	0.20	0.37	0.39	0.24	0.13	0.10	0.05	0.03	0.02	0.01	0.00	1.84	0.00
-30	0.00	0.01	0.01	0.02	0.03	0.06	0.10	0.13	0.15	0.15	0.13	0.11	0.06	0.04	0.02	0.01	0.01	0.00	1.04	0.00
-40	0.00	0.01	0.01	0.02	0.03	0.04	0.05	0.08	0.10	0.10	0.08	0.06	0.04	0.03	0.02	0.01	0.01	0.00	0.68	0.00
-50	0.00	0.00	0.01	0.02	0.02	0.03	0.04	0.04	0.05	0.05	0.05	0.04	0.03	0.03	0.02	0.01	0.01	0.00	0.45	0.00
-60	0.00	0.00	0.01	0.01	0.02	0.02	0.03	0.03	0.03	0.04	0.03	0.03	0.03	0.02	0.02	0.01	0.01	0.00	0.34	0.00
-70	0.00	0.00	0.01	0.01	0.01	0.02	0.02	0.02	0.02	0.02	0.02	0.02	0.02	0.02	0.01	0.01	0.00	0.00	0.25	0.00
-80	0.00	0.00	0.01	0.01	0.01	0.01	0.01	0.01	0.02	0.02	0.02	0.02	0.01	0.01	0.01	0.00	0.00	0.00	0.17	0.00
-90	0.00	0.00	0.01	0.01	0.01	0.01	0.01	0.01	0.02	0.02	0.02	0.01	0.01	0.01	0.01	0.00	0.00	0.00	0.17	0.00
	-90	-80	-70	-60	-50	-40	-30	-20	HORIZONTAL( DEG)	20	30	40	50	60	70	80	90			
• t	0.02	0.09	0.19	0.33	0.61	0.99	2.17	5.19	14.8	25.5	6.07	2.74	1.10	0.67	0.38	0.22	0.11	0.03	61	---
• a	0.00	0.00	0.00	0.00	0.00	0.00	0.00	0.00	5.34	15.4	0.00	0.00	0.00	0.00	0.00	0.00	0.00	0.00	---	21

H( ) Range:-90 - 90DEG  
 H( ) Interval: 0.5DEG  
 Test Speed: HIGH  
 Temperature:25.3DEG  
 Operators:  
 Test Date:2009-10-10

V(B) Range:-90 - 90DEG  
 V(B) Interval: 0.5DEG  
 Test System:EVERFINE GO-SPEC316 SYSTEM V1.0.254  
 Humidity:65.0%  
 Test Distance:3.160m [K=1.0000]  
 Remarks: