

**Type: NSO-01XPE-15L-22.5x10.5**

**Diameter:  $\Phi$ 22.5mm**

**Height: 10.5mm**

**Fov: 15°**

**Material: Optical grade Acrylic plastic**

**Up to 93% efficiency**

**LED Series: CREE XPE**

Applications:

Reading lights(car, bus, aircraft)

Portable (flashlight, bicycle)

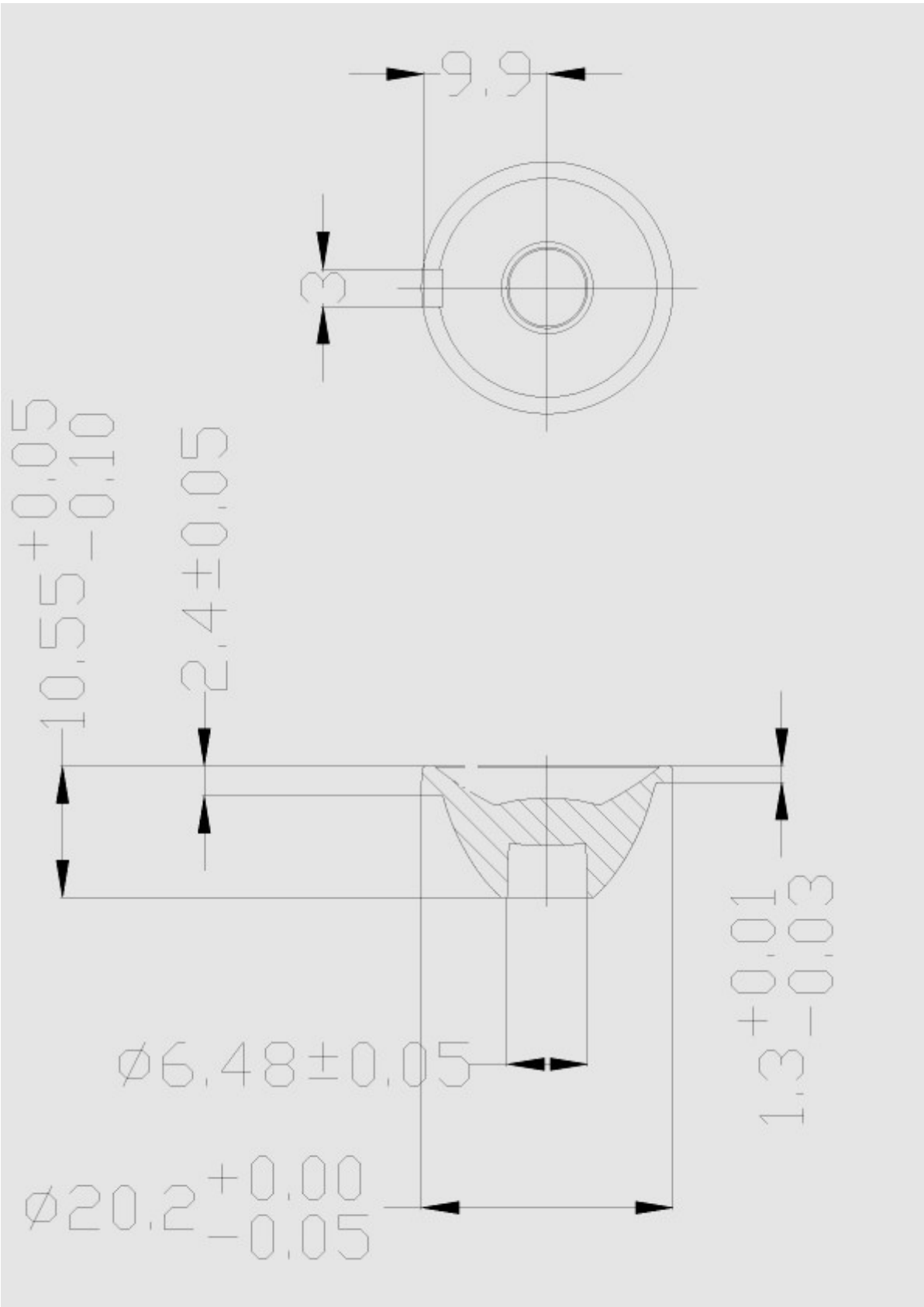
Mini-accent/Decorative/Fiber Optics Alternative

Undershelf / Task Lighting

Indoor and Outdoor Commercial and Residential Architectural lighting

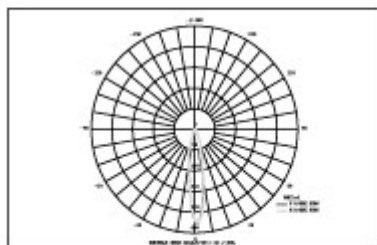
- Operating Temperature range  $-40^{\circ}\text{C} \sim +70^{\circ}\text{C}$  (upper limit  $+80^{\circ}\text{C}$ )
- Storage Temperature range  $-40^{\circ}\text{C} \sim +70^{\circ}\text{C}$  (upper limit  $+80^{\circ}\text{C}$ )
- Usage and Maintenance :
  1. If necessary, clean lenses with mild soap, water and soft cloth
  2. Never use any commercial cleaning solvents on lenses, like alcohol

### Lens dimensions and Top Views



## Light Distribution Curve

NAME:	TYPE:	WEIGHT:
DIMENSION:	SPECIFICATION:	SERIAL No.:
MANUFACTURER:	SURFACE:	PROTECTION ANGLE:



DATA OF LAMP		PHOTOMETRIC DATA	
MODEL	CREE-XPE	I <sub>max</sub> (cd)	368.3
NOMINAL POWER (W)	4	AVAILABILITY (†)	63.5
RATED VOLTAGE (V)	3.09	Avai. FLUX (lm)	58.68
NOMINAL FLUX (lm)	92.370	EFFICIENCY (%)	89.0
LAMPS INSIDE	1	TOTAL FLUX (lm)	82.22
TEST VOLTAGE (V)	3.09	• 850% (H,V)	18,18D8G

AREA FLUX DIAGRAM																	UNIT:lm			
VERTICAL (DEG)																	•	t	•	a
	HORIZONTAL (DEG)																			
90	0.00	0.01	0.02	0.02	0.03	0.03	0.04	0.04	0.05	0.05	0.05	0.04	0.04	0.03	0.03	0.02	0.01	0.00	0.51	0.00
80	0.00	0.01	0.02	0.03	0.03	0.04	0.05	0.06	0.06	0.06	0.06	0.06	0.05	0.04	0.03	0.02	0.01	0.00	0.63	0.00
70	0.00	0.01	0.02	0.03	0.04	0.05	0.06	0.06	0.06	0.07	0.06	0.06	0.05	0.05	0.04	0.03	0.01	0.00	0.70	0.00
60	0.00	0.01	0.02	0.03	0.04	0.06	0.07	0.08	0.10	0.10	0.09	0.07	0.06	0.05	0.04	0.03	0.02	0.00	0.86	0.00
50	0.00	0.01	0.02	0.04	0.05	0.08	0.12	0.14	0.15	0.15	0.15	0.14	0.09	0.05	0.04	0.03	0.02	0.00	1.28	0.00
40	0.00	0.01	0.03	0.04	0.07	0.10	0.12	0.20	0.29	0.31	0.23	0.13	0.12	0.08	0.04	0.03	0.02	0.01	1.83	0.00
30	0.00	0.01	0.03	0.05	0.09	0.10	0.24	0.65	1.19	1.30	0.88	0.35	0.12	0.10	0.05	0.03	0.02	0.01	5.21	2.31
20	0.00	0.01	0.03	0.05	0.08	0.14	0.49	1.63	3.00	3.26	2.05	0.83	0.20	0.09	0.06	0.03	0.02	0.01	12.0	10.2
10	0.00	0.01	0.03	0.05	0.08	0.16	0.68	2.47	5.52	7.99	3.22	1.18	0.27	0.09	0.07	0.03	0.02	0.01	22.9	21.3
0	0.00	0.01	0.03	0.05	0.07	0.15	0.58	2.24	5.49	6.36	2.91	1.03	0.25	0.09	0.06	0.03	0.02	0.01	19.4	17.7
-10	0.00	0.01	0.03	0.05	0.07	0.11	0.33	1.08	2.40	2.59	1.41	0.52	0.16	0.08	0.06	0.03	0.02	0.01	8.96	6.81
-20	0.00	0.01	0.03	0.04	0.07	0.09	0.16	0.34	0.64	0.69	0.42	0.20	0.10	0.08	0.05	0.03	0.02	0.01	2.99	0.29
-30	0.00	0.01	0.03	0.04	0.06	0.08	0.09	0.13	0.18	0.19	0.15	0.10	0.09	0.07	0.04	0.03	0.02	0.01	1.32	0.00
-40	0.00	0.01	0.02	0.04	0.05	0.07	0.09	0.09	0.10	0.10	0.10	0.10	0.08	0.06	0.04	0.03	0.02	0.01	1.00	0.00
-50	0.00	0.01	0.02	0.03	0.04	0.05	0.07	0.08	0.09	0.09	0.08	0.07	0.06	0.05	0.04	0.03	0.02	0.00	0.85	0.00
-60	0.00	0.01	0.02	0.03	0.04	0.05	0.05	0.06	0.06	0.06	0.06	0.06	0.06	0.05	0.04	0.03	0.02	0.00	0.71	0.00
-70	0.00	0.01	0.02	0.03	0.03	0.04	0.04	0.05	0.05	0.05	0.05	0.05	0.05	0.05	0.04	0.03	0.01	0.00	0.61	0.00
-80	0.00	0.01	0.02	0.02	0.03	0.03	0.03	0.04	0.04	0.04	0.04	0.04	0.04	0.04	0.04	0.03	0.02	0.01	0.50	0.00
-90	0.00	0.01	0.02	0.02	0.03	0.03	0.03	0.04	0.04	0.04	0.04	0.04	0.04	0.04	0.04	0.03	0.02	0.01	0.50	0.00
• t	0.07	0.23	0.43	0.67	0.99	1.43	3.31	9.44	20.5	23.4	12.0	5.04	1.89	1.15	0.80	0.51	0.29	0.09	82	---
• a	0.00	0.00	0.00	0.00	0.00	0.00	0.34	7.05	18.3	21.3	9.70	1.93	0.00	0.00	0.00	0.00	0.00	0.00	---	59

H(•) Range:-90 - 90DEG  
 H(•) Interval: 0.5DEG  
 Test Speed: HIGH  
 Temperature:25.3DEG  
 Operators:  
 Test Date:2009-10-08

V(B) Range:-90 - 90DEG  
 V(B) Interval: 0.5DEG  
 Test System:EVERFINE GO-SPEC316 SYSTEM V1.0.254  
 Humidity:65.0%  
 Test Distance:3.160m [K=1.0000]  
 Remarks: