



Type: NSO-01XPE-08L-21.9x13.8

Diameter: Φ 21.9mm

Height: 13.8mm

Fov: 8°

Material: Optical grade Acrylic plastic

Up to 91.2% efficiency

LED Series: CREE XLamp XP-E

Applications:

Reading lights(car, bus, aircraft)

Portable (flashlight, bicycle)

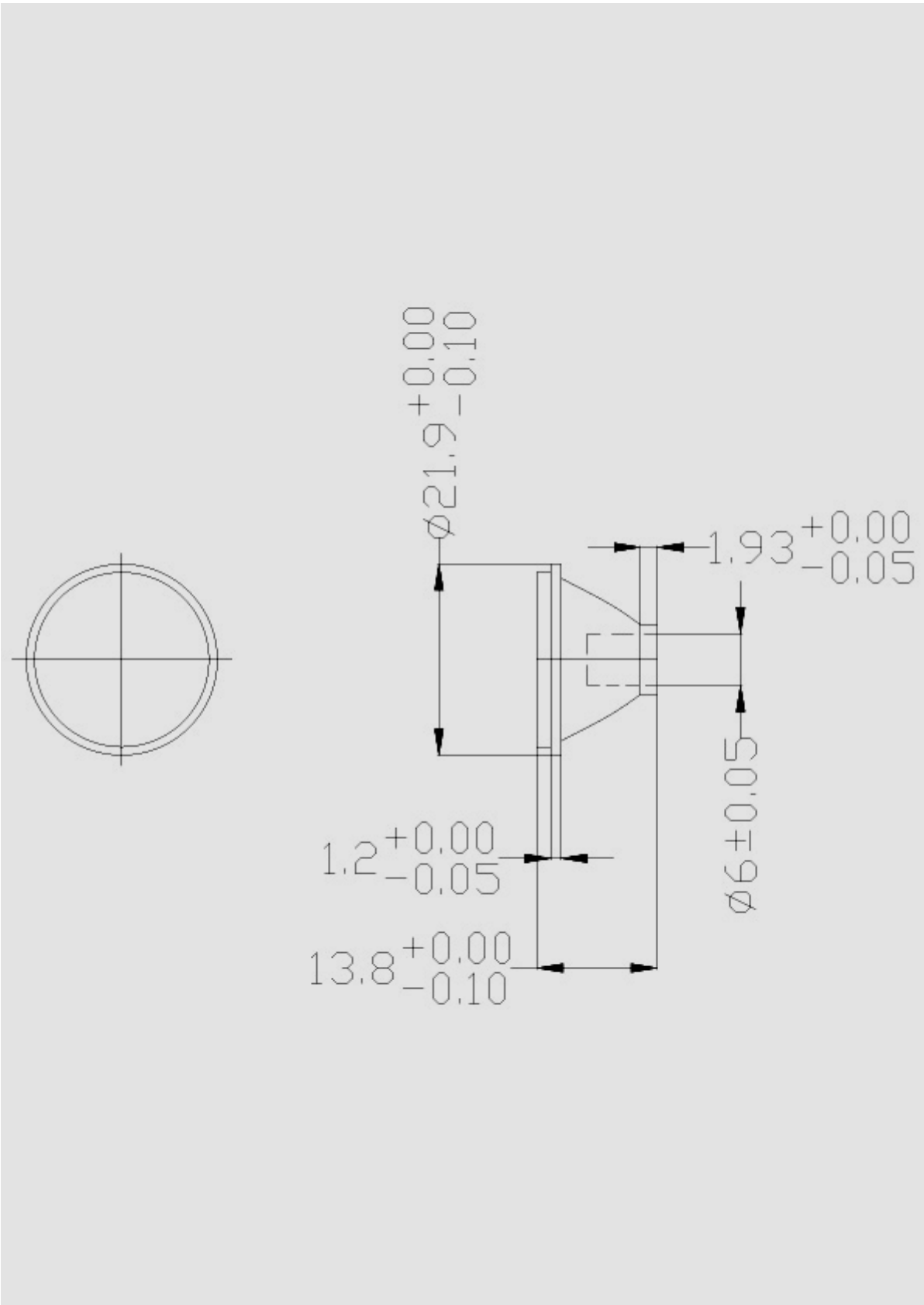
Mini-accent/Decorative/Fiber Optics Alternative

Undershelf / Task Lighting

Indoor and Outdoor Commercial and Residential Architectural lighting

- Operating Temperature range $-40^{\circ}\text{C} \sim +70^{\circ}\text{C}$ (upper limit $+80^{\circ}\text{C}$)
- Storage Temperature range $-40^{\circ}\text{C} \sim +70^{\circ}\text{C}$ (upper limit $+80^{\circ}\text{C}$)
- Usage and Maintenance :
 1. If necessary, clean lenses with mild soap, water and soft cloth
 2. Never use any commercial cleaning solvents on lenses, like alcohol

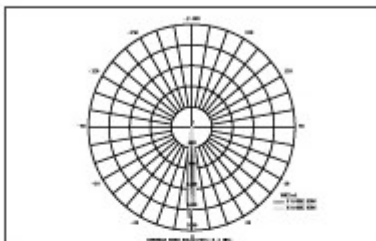
Lens dimensions and Top Views



Light Distribution Curve

LUMINAIRE PHOTOMETRIC TEST REPORT

NAME: NSO-01XPE-08L-21.9x13.8	TYPE:	WEIGHT:
DIMENSION:	SPECIFICATION:	SERIAL No.:
MANUFACTURER:	SURFACE:	PROTECTION ANGLE:



DATA OF LAMP		PHOTOMETRIC DATA	
MODEL	CREE-XPE	Imax(cd)	1738
NOMINAL POWER(W)	1	AVAILABILITY(%)	44.7
RATED VOLTAGE (V)	3.11	Avai. FLUX(lm)	41.40
NOMINAL FLUX(lm)	92.660	EFFICIENCY(%)	89.0
LAMPS INSIDE	1	TOTAL FLUX(lm)	82.44
TEST VOLTAGE (V)	3.11	• @50% (H,V)	8.9026

VERTICAL (DEG)	AREA FLUX DIAGRAM																				UNIT:lm		
																					• t	• a	
90	0.00	0.01	0.01	0.02	0.02	0.03	0.03	0.04	0.04	0.05	0.04	0.04	0.04	0.03	0.02	0.02	0.01	0.00	0.47	0.00			
80	0.00	0.01	0.02	0.02	0.03	0.04	0.05	0.06	0.06	0.06	0.06	0.06	0.05	0.04	0.03	0.02	0.01	0.00	0.62	0.00			
70	0.00	0.01	0.02	0.03	0.04	0.05	0.06	0.07	0.07	0.07	0.07	0.07	0.06	0.05	0.03	0.02	0.01	0.00	0.75	0.00			
60	0.00	0.01	0.02	0.03	0.05	0.06	0.07	0.08	0.09	0.09	0.08	0.08	0.07	0.05	0.04	0.03	0.01	0.00	0.87	0.00			
50	0.00	0.01	0.03	0.04	0.05	0.07	0.09	0.11	0.13	0.13	0.12	0.10	0.08	0.06	0.04	0.03	0.01	0.00	1.10	0.00			
40	0.00	0.02	0.03	0.04	0.06	0.09	0.12	0.16	0.20	0.20	0.17	0.13	0.09	0.06	0.04	0.03	0.01	0.00	1.48	0.00			
30	0.00	0.02	0.03	0.05	0.07	0.11	0.21	0.49	0.72	0.70	0.46	0.20	0.11	0.07	0.05	0.03	0.01	0.00	3.32	0.00			
20	0.00	0.02	0.03	0.05	0.08	0.13	0.44	1.01	1.51	1.29	0.88	0.41	0.13	0.08	0.05	0.03	0.02	0.00	6.16	0.00			
10	0.00	0.02	0.03	0.05	0.08	0.15	0.63	1.47	17.1	9.39	1.09	0.59	0.15	0.08	0.05	0.03	0.02	0.00	30.9	24.1			
0	0.00	0.02	0.03	0.05	0.08	0.14	0.58	1.24	12.9	7.08	1.03	0.54	0.14	0.08	0.05	0.03	0.02	0.00	24.0	17.3			
-10	0.00	0.02	0.03	0.05	0.08	0.12	0.32	0.82	1.13	1.09	0.75	0.29	0.12	0.08	0.05	0.03	0.01	0.00	5.00	0.00			
-20	0.00	0.02	0.03	0.05	0.07	0.11	0.16	0.31	0.54	0.51	0.27	0.14	0.10	0.07	0.04	0.03	0.01	0.00	2.46	0.00			
-30	0.00	0.02	0.03	0.05	0.07	0.09	0.12	0.14	0.16	0.16	0.14	0.11	0.08	0.06	0.04	0.03	0.01	0.00	1.32	0.00			
-40	0.00	0.02	0.03	0.04	0.06	0.08	0.10	0.11	0.11	0.11	0.10	0.09	0.07	0.06	0.04	0.03	0.01	0.00	1.06	0.00			
-50	0.00	0.02	0.03	0.04	0.06	0.07	0.08	0.09	0.09	0.09	0.08	0.08	0.06	0.05	0.04	0.02	0.01	0.00	0.91	0.00			
-60	0.00	0.01	0.03	0.04	0.05	0.06	0.07	0.07	0.08	0.08	0.07	0.06	0.06	0.05	0.03	0.02	0.01	0.00	0.80	0.00			
-70	0.00	0.01	0.02	0.04	0.05	0.05	0.06	0.06	0.06	0.06	0.06	0.05	0.05	0.04	0.03	0.02	0.01	0.00	0.67	0.00			
-80	0.00	0.01	0.02	0.03	0.04	0.04	0.04	0.05	0.04	0.04	0.04	0.04	0.03	0.03	0.02	0.01	0.01	0.00	0.51	0.00			
-90	-90	-80	-70	-60	-50	-40	-30	-20	HORIZONTAL (DEG)	20	30	40	50	60	70	80	90						
• t	0.07	0.26	0.48	0.73	1.03	1.49	3.23	6.38	35.0	21.2	5.51	3.07	1.49	1.03	0.70	0.44	0.23	0.06	02	---			
• a	0.00	0.00	0.00	0.00	0.00	0.00	0.00	0.00	28.1	13.3	0.00	0.00	0.00	0.00	0.00	0.00	0.00	0.00	---	41			

H(•) Range:-90 - 90DEG
 H(•) Interval: 0.5DEG
 Test Speed: HIGH
 Temperature:25.3DEG
 Operators:
 Test Date:2009-10-08

V(B) Range:-90 - 90DEG
 V(B) Interval: 0.5DEG
 Test System:EVERFINE GO-SPEC316 SYSTEM V1.0.254
 Humidity:65.0%
 Test Distance:3.160m [K=1.0000]
 Remarks: