
Specification For 5050 SMD 3-LED Module

(Waterproof)

| Part Number | Color |
|-------------------|-------------------------------------|
| 20NEO-F12T73R3-E | <input type="checkbox"/> Red |
| 20NEO-F12T73Y3-E | <input type="checkbox"/> Yellow |
| 20NEO-F12T73B3-E | <input type="checkbox"/> Blue |
| 20NEO-F12T73G3-E | <input type="checkbox"/> Green |
| 20NEO-F12T73W3-E | <input type="checkbox"/> Pure White |
| 20NEO-F12T73CW3-E | <input type="checkbox"/> Cool White |
| 20NEO-F12T73WW3-E | <input type="checkbox"/> Warm White |



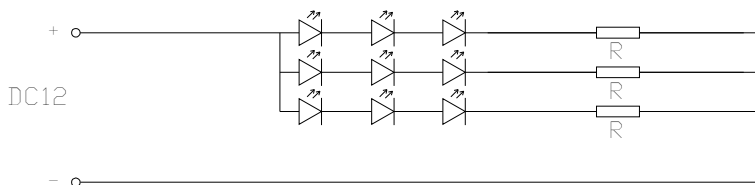
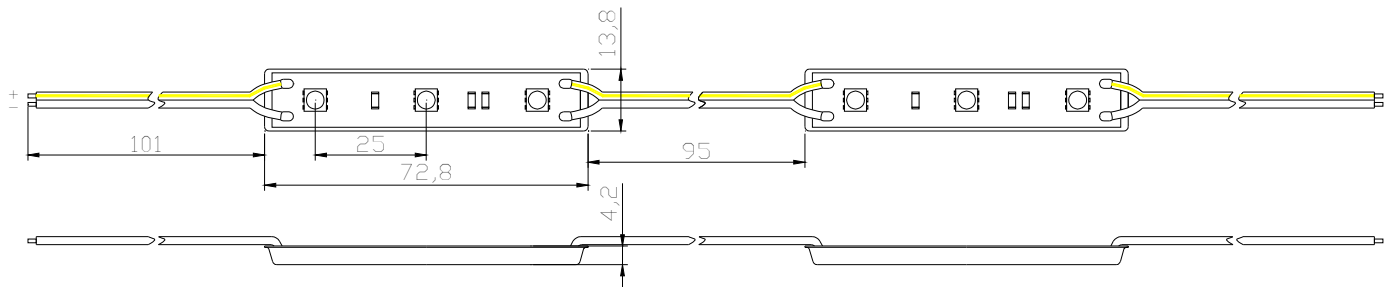
Features for one LED module:

- ◇ To adopt the 5050 SMD LED as the light source;
- ◇ Working Voltage : DC12 V
- ◇ LED Working Current : 51-57mA
- ◇ LED View Angle : 120DEG
- ◇ Grade of waterproof : IP66
- ◇ Packing : Carton

Applications :

- ◇ Add. boxes ;
- ◇ Lighting projects ;
- ◇ Family decorations ;
- ◇ Special lighting in other places ;

Product measurement and circuit diagram



单位 : 毫米

Absolute maximum parameter (Ta=25°C) for one LED module :

| Item | Symble | Absolute Maximum parameter | Unit |
|---------------------|--------|----------------------------|------|
| Forward Current | IF | 60 | mA |
| Power | PD | 0.72 | W |
| Anti-static Voltage | ESD | 800 | V |
| Working temperature | Topr | -25~+45 | °C |
| Storage temperature | Tstg | -40~+80 | °C |

Electrical / Optical characteristics(Ta=25°C)

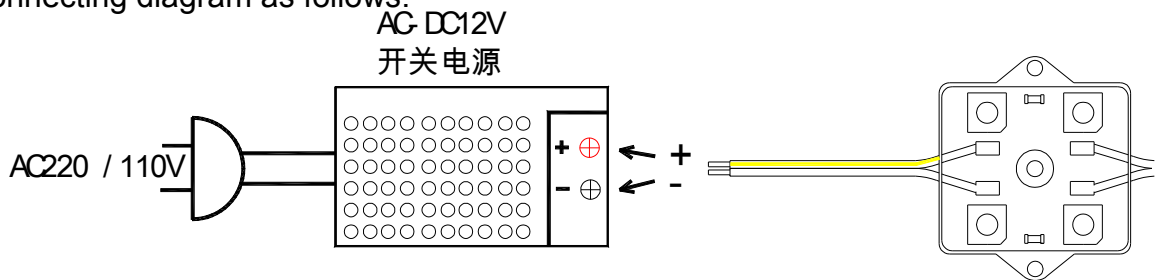
| Part No. | Color | Max Power | Working current | Wave/color temperature | Chain Luminous Flux | Quantity In chain |
|-------------------|-------|-----------|-----------------|------------------------|---------------------|-------------------|
| 20NEO-F12T73R3-E | R | 14.4 | 1.2A | 625-630nm | 240Lm | 20 |
| 20NEO-F12T73Y3-E | Y | 14.4 | 1.2A | 590-595nm | 240Lm | |
| 20NEO-F12T73B3-E | B | 14.4 | 1.2A | 465-470nm | 240Lm | |
| 20NEO-F12T73G3-E | G | 14.4 | 1.2A | 515-520nm | 600Lm | |
| 20NEO-F12T73W3-E | W | 14.4 | 1.2A | 5000-6000k | 900Lm | |
| 20NEO-F12T73CW3-E | CW | 14.4 | 1.2A | 7000-9000k | 900Lm | |
| 20NEO-F12T73WW3-E | WW | 14.4 | 1.2A | 2900-3200k | 900Lm | |

Remark: 1. Flux measurements allow tolerance of ± 15%. 2.LED Flux, Wave length, color temperature parameter can be produced by customers specifying.

Instruction :

1、 Wires connecting methods :

3 PCS 5050 LED module (waterproof): 2 power wires are to be connected from the products. One is yellow color, the other is pure white color, the diameter is 22AWG, and the length is 110mm. The yellow wire should be connected at DC12v power positive pole, and the pure white wire should be connected at DC12v power negative pole. The wires connecting diagram as follows:



2 Installation methods :

To Put the double glue fabric on the base.

3.Installation remarks :

- 1) 、 correct connecting
- 2) 、 Do not extend the absolute maximum parameter when the products are working
- 3) 、 Note anti-static as the process of installing and working. Do not touch the light source and glue with the sharp things
- 4)、 Do not touch the chemicals, close fire
- 5) 、 The longest one-way to power a few lights to not more than 30 light source